



FINAL EXAMINATION

COURSE : BASIC HUMAN ANATOMY

COURSE CODE : HSM1123

DURATION : 02 HOURS

INSTRUCTIONS TO CANDIDATES :

1. This question paper consists of **THREE (3)** parts : PART A (15 questions)
: PART B (07 questions)
: PART C (02 questions)
2. Answer ALL questions from PART A, PART B and PART C.
 - i. Answer PART A in the Objective Answer Sheet.
 - ii. Answer PART B and C in the Answer Booklet provided.
3. Please check to make sure that this examination pack consists of :
 - i. The Question Paper
 - ii. An Answer Booklet
 - iii. An Objective Answer Sheet
4. Do not bring any material into the examination hall unless permission is given by the invigilator.
5. Do not bring out this question paper from the examination hall.
6. Please write your answer using a ball-point pen.

MYKAD NO : _____

ID. NO. : _____

LECTURER : _____

SECTION : _____

DO NOT OPEN THIS QUESTION PAPER UNTIL YOU ARE TOLD TO DO SO

The question paper consists of 06 printed pages

SEPT2018/E/HSM1123

PART A: MULTIPLE CHOICE*Choose the BEST ANSWER and write the answer in the Objective Answer Sheet provided.***1. (1 point)**

What is the shape of the heart in the human body?

- A. The heart is cone-shaped.
- B. The heart is cylinder shaped.
- C. The heart is round shaped.
- D. The heart is bean-shaped.

2. (1 point)

How many chambers does the heart have?

- A. Six.
- B. Five.
- C. Four.
- D. Three.

3. (1 point)

What are the parts that control blood flow in the heart?

- A. Valves.
- B. Heart dams.
- C. Kidneys.
- D. Chambers.

4. (1 point)

Which wall separates the left side and right side of the heart?

- A. Ventricle.
- B. Atrium.
- C. Septum.
- D. The great wall.

5. (1 point)

The respiratory system is made up of the trachea, the lungs, and _____.

- A. liver
- B. diaphragm
- C. esophagus
- D. pancreas

6. (1 point)

When you breathe in air, you bring oxygen into your lungs and blow out _____.

- A. carbon dioxide.
- B. carbon monoxide.
- C. oxygen.
- D. hydrogen.

7. (1 point)

What is the name of the tiny air sacs in the lungs?

- A. Bronchioles.
- B. Ravioli.
- C. Alveoli.
- D. Bronx.

8. (1 point)

How long is an adult's small intestine?

- A. 5 meters.
- B. 6 meters.
- C. 9 meters.
- D. 1.5 meters.

9. (1 point)

This part of the digestive system that removes solid wastes such as feces from the body is _____.

- A. large intestine
- B. small intestine
- C. esophagus
- D. trachea

10. (1 point)

This organ stores swallowed food and liquid, mixes up digestive juices with the food and liquid and sends it to the small intestine.

- A. Mouth.
- B. Esophagus.
- C. Stomach.
- D. Large intestine.

11. (1 point)

The opening at the end of the digestive tract in which solid wastes are eliminated is _____.

- A. Anus.
- B. Mucosa.
- C. Liver.
- D. Small intestine.

12. (1 point)

Which of the following parts is **NOT** found in the urinary system?

- A. Ureters.
- B. Urethra.
- C. Bladder.
- D. Rectum.

13. (1 point)

The _____ is a muscle that prevents urine from existing the bladder until you're ready to go to the toilet.

- A. calf
- B. quadriceps
- C. pectoral
- D. sphincter

14. (1 point)

Urine that has glucose in it is usually an indicator of _____.

- A. diabetes mellitus
- B. a bacterial infection
- C. muscle atrophy
- D. acidosis

15. (1 point)

What is the colour of the urine of a person that probably dehydrated?

- A. Dark yellow.
- B. Pale yellow.
- C. Transparent yellow.
- D. Colourless.

11. (1 point)

The opening at the end of the digestive tract in which solid wastes are eliminated is _____.

- A. Anus.
- B. Mucosa.
- C. Liver.
- D. Small intestine.

12. (1 point)

Which of the following parts is **NOT** found in the urinary system?

- A. Ureters.
- B. Urethra.
- C. Bladder.
- D. Rectum.

13. (1 point)

The _____ is a muscle that prevents urine from existing the bladder until you're ready to go to the toilet.

- A. calf
- B. quadriceps
- C. pectoral
- D. sphincter

14. (1 point)

Urine that has glucose in it is usually an indicator of _____.

- A. diabetes mellitus
- B. a bacterial infection
- C. muscle atrophy
- D. acidosis

15. (1 point)

What is the colour of the urine of a person that probably dehydrated?

- A. Dark yellow.
- B. Pale yellow.
- C. Transparent yellow.
- D. Colourless.

PART B: STRUCTURE

Answer ALL questions. Write your answer in the Answer Booklet provided.

1. (2 points)

According to the diagram below, label the heart blood artery and vein in cardiovascular system.

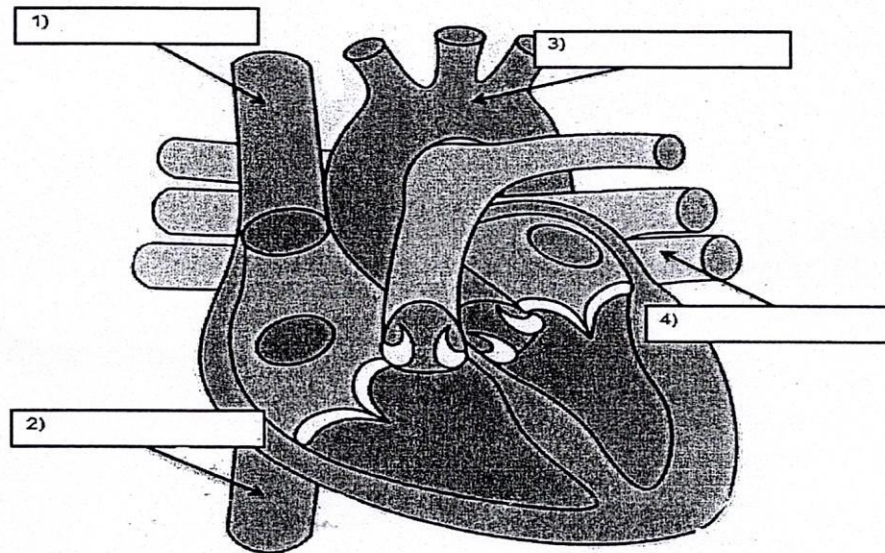


Diagram 1: The heart

2. (3 points)

List **THREE (3)** main organs involved in the respiratory system.

3. (3 points)

Give **THREE (3)** main organs involved in the digestive system.

4. (2 points)

There are four tunic or tissue layers in digestive tract wall. Distinguish between mucosa and submucosa layer.

5. (2 points)

Classify **TWO (2)** characteristics of stomach as a muscular organ located on the left side of the upper abdomen.

6. (2 points)

Discuss the characteristics of urine in urinary system.

7. (1 point)

State **ONE (1)** function of urinary bladder in urinary system.

PART C: ESSAY

Answer ALL questions. Write your answer in the Answer Booklet provided.

1. (10 points)

Cardiovascular system is sometimes called the blood-vascular, or simply the circulatory system. It consists of the heart which functions as a muscular pumping device.

- a) Distinguish between arteries, capillaries and veins. (6 points)
- b) Compare between right ventricular and left ventricular. (4 points)

2. (10 points)

The cardiovascular system is composed of two circulatory paths, pulmonary circulation and systematic circulation. Explain in detail the pathway of blood through the heart in cardiovascular system.